

# CERTIFICATE OF LOCATION OF GOVERNMENT CORNER

County of Anoka

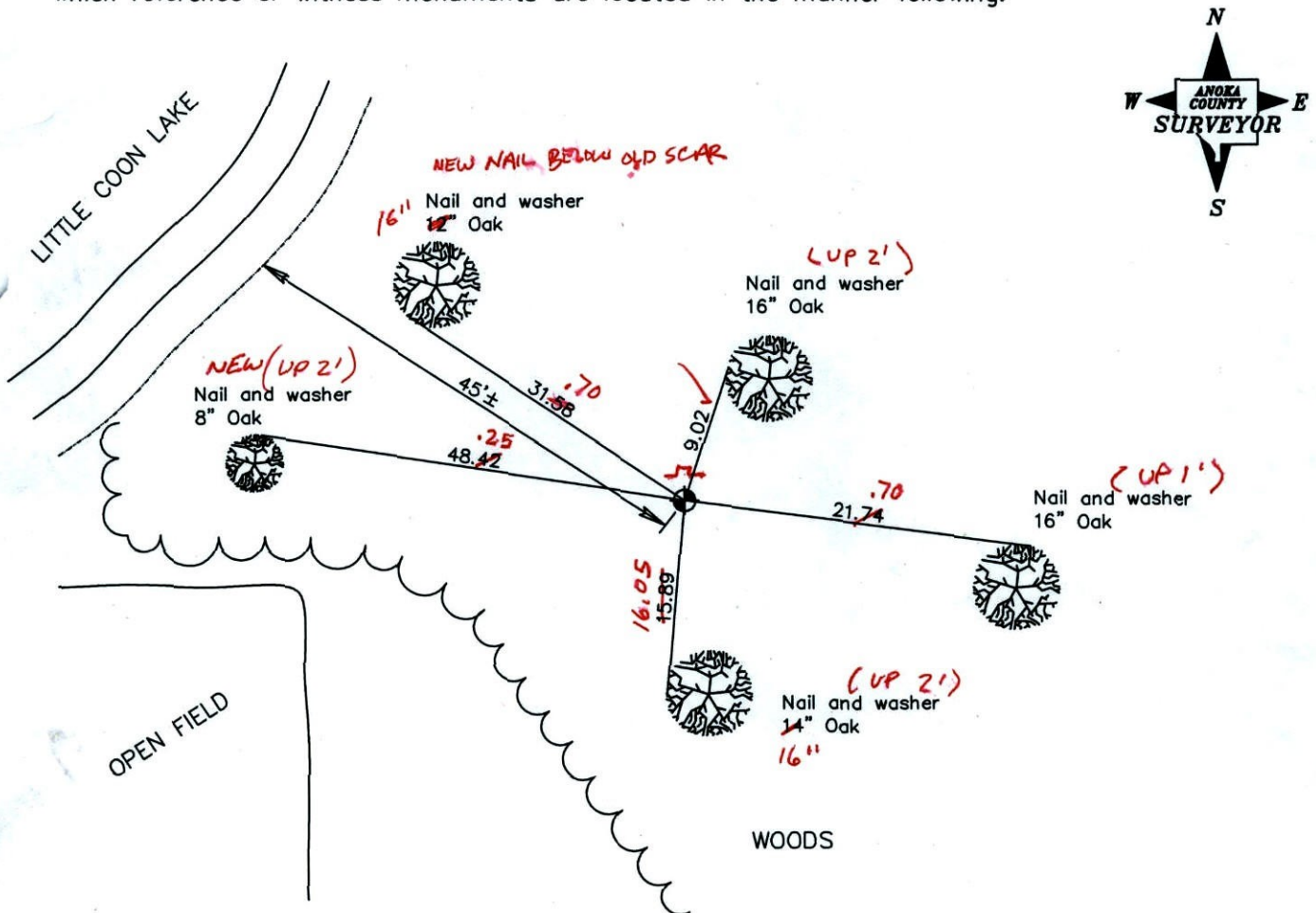
State of Minnesota

Southeast Corner of Sec. 3 Township 32 Range 23

I hereby certify that on the 1st day of January, 1961, I found the described corner which was evidenced by a concrete monument

and I further certify that to perpetuate the location of said corner, I did, at the exact location thereof, place a permanent marker consisting of a cast iron monument with sign and post on the north side DOWN (0.2')

which reference or witness monuments are located in the manner following:



BK-55  
TAPED

Revised date

11/15/91
8/28/96
1/03/02
<span style="color: red;">3-23-11</span>

N.A.D. 1983 Coordinates  
(1996 adjustment)

County Project Coordinates	State Plane Coordinates
Northing <u>190535.2657</u>	Y _____
Easting <u>521402.2652</u>	X _____

Date 1/03/02



# CERTIFICATE OF LOCATION OF GOVERNMENT CORNER

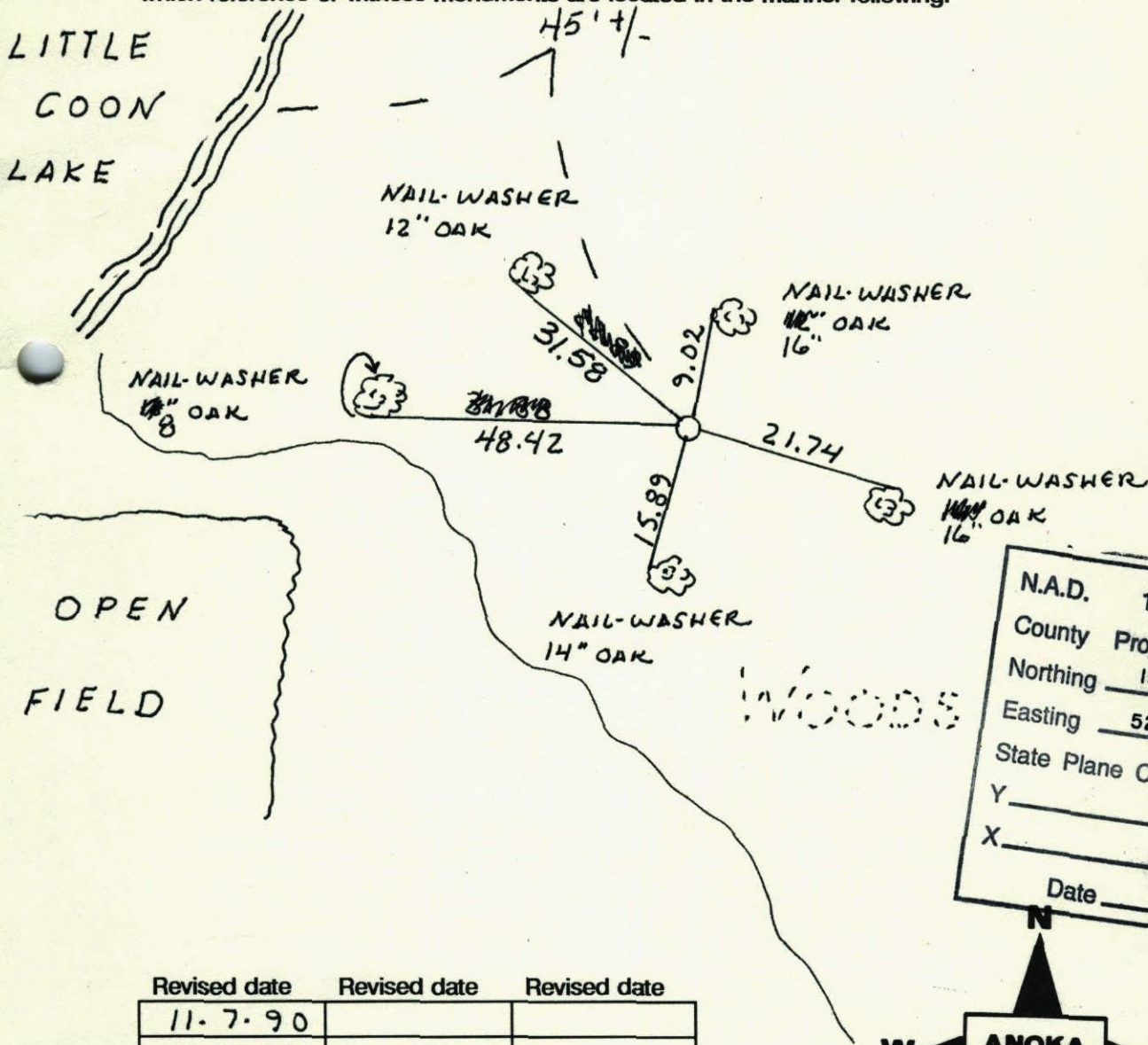
County of Anoka                      State of Minnesota

SOUTHEAST Corner of Sec. 3 Township 32 Range 23

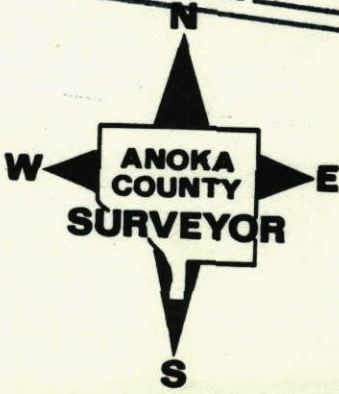
I hereby certify that on the 1<sup>ST</sup> day of JAN, 1961, I found the described corner which was evidenced by CONCRETE

and I further certify that to perpetuate the location of said corner, I did, at the exact location thereof, place a permanent marker consisting of CAST IRON MONUMENT, SIGN AND POST ON NORTH SIDE

which reference or witness monuments are located in the manner following:



N.A.D.	1983	Co-ordinates
County	Project	Co-ordinates
Northing	190535.2657	
Easting	521402.2652	
State Plane Co-ordinates		
Y	_____	
X	_____	
Date	_____	



Revised date	Revised date	Revised date
11-7-90		
11-15-91		
8-28-96		
1-3-02		



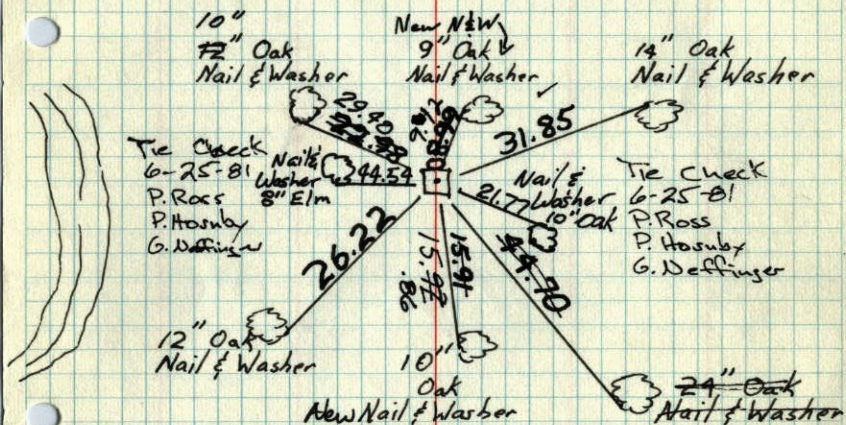
## SE. Cor. Sec 3-T32-R23

Concrete Monument up 0.8'  
Iron pipe on North side of Mon.

Concrete Monument Broken  
(now flush with ground)  
Set cast Iron mon in place warning sign 1'±N  
July 17, 1974  
R Farmer

Jan. 3, 1961 Tie Check  
N Dahl May 24, 1971  
D Dahl

R. Freeman M. D. Anderson  
M. D. Anderson R. Brien



Tie Check  
June 19, 1975  
D. Dahl  
B. Sannerud  
G. Adams

TIE CHECK  
June 29, 1984  
R. Bennett  
D. Ross, G. Lips

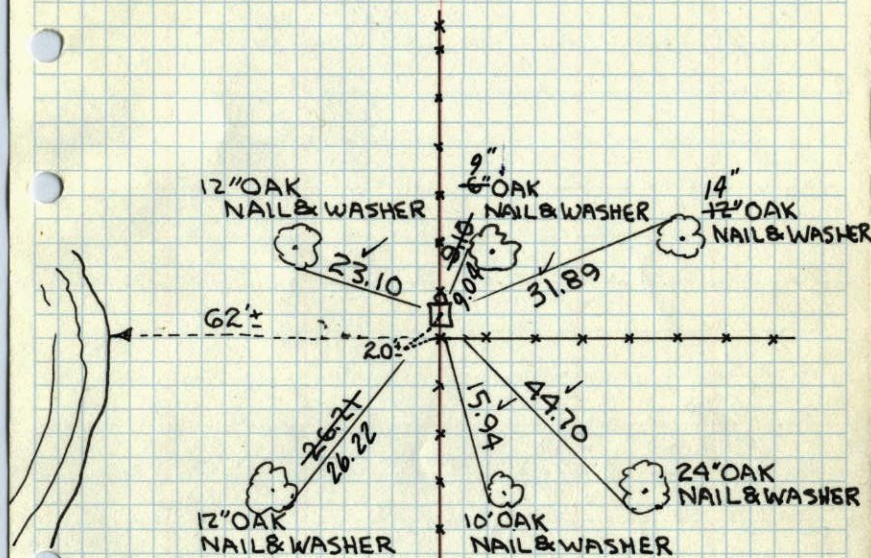
Tie Check  
June 8, 1978  
D. Dahl  
B. Stephens  
M. Kistron

TEMPERATURE CORRECTED  
AND HORIZONTALLY  
TAPED MEASUREMENTS

ROLAND W. ANDERSON  
COUNTY SURVEYOR  
ANOKA COUNTY, MINNESOTA

## SE. COR. SEC. 3, T. 32, R. 23

CONC. MON. UP 0.8'  
IRON PIPE ON N. SIDE OF MON.



TEMPERATURE CORRECTED  
AND HORIZONTALLY  
TAPED MEASUREMENTS

Tie Check  
July 22, 1966  
B. Rogers  
D. Powell  
R. Smith

ROLAND W. ANDERSON  
COUNTY SURVEYOR  
ANOKA COUNTY, MINNESOTA

JAN 3, 1961  
R. FREEMAN  
M. ANDERSON

Retie 7/8/64

M. D. Anderson  
R. Carlson  
N. Livgard

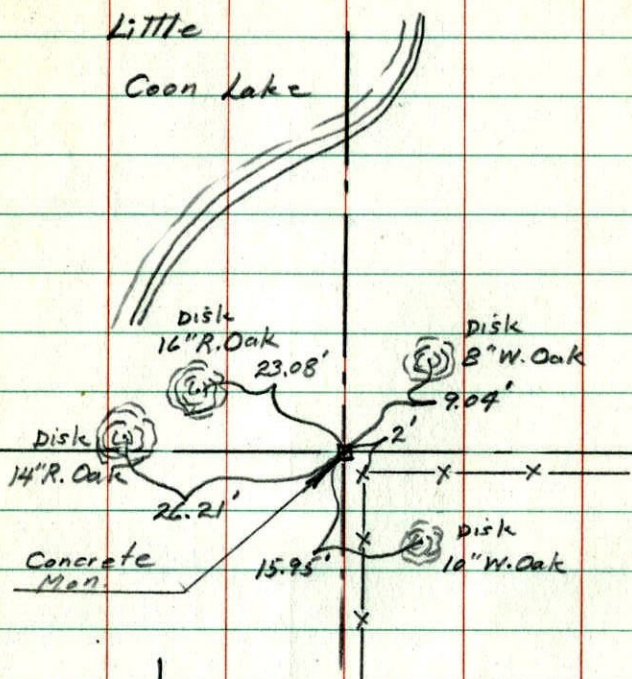






S.E. Corner Sec. 3-32-23

Little  
Coon Lake



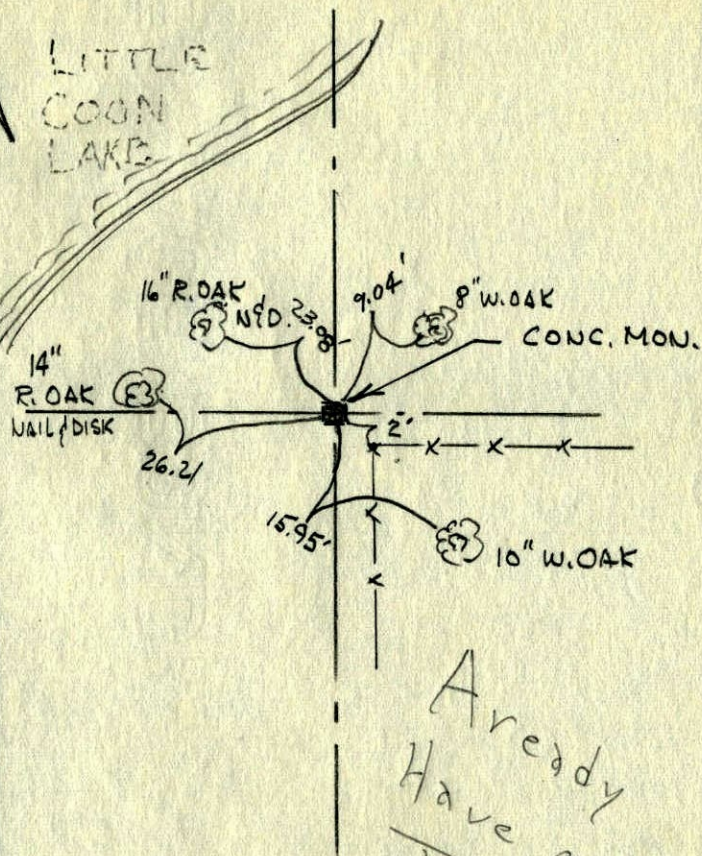
May 29, 1960

Robert M. Knudsen

S.E. CORNER TIE  
SECTION 3-32-23

N

LITTLE  
COON  
LAKE



Already  
Have our own  
Ties P 97